



**+** RELIABLE PROGRESSIVE

**SELECTAPRESS**

 **FAUN**  **ZOELLER**

# Overall Concept

Twin compartment recycling collection

- Split Body - two waste fractions in one body – productivity
- 70:30, 50:50 or 30:70 body ratio
- Light Tailgate – excellent load distribution
- Short Tailgate – excellent manoeuvrability
- Independent Tailgates– No cross contamination
- Load Sensing Hydraulics – energy efficient



# Body Designation

70:30, 50:50 or 30:70 body ratio

- Independent emptying
- Empty right or left first – versatility – ease of operation
- Customise the vehicle to your operation
- Right and left side body access door, independent ease of maintenance
- Optimised construction – Reliability, productivity



# Tailgates

Optimised Independent Design – minimal lifter interface

**RELIABLE**  
**PROGRESSIVE**



- Improved payload
- Improved load distribution
- Improved turning circle
- Independent collection operations
- Independent compaction pressures
- No cross contamination during tipping
- Separate packers running on a single carriage - Reduced number of working parts
- Minimal Overhang - Excellent manoeuvrability
- Hook locking - productivity

# Ejection Plate

Individual control

**RELIABLE**  
**PROGRESSIVE**



- Guides on ejector plates - Smooth & quick waste ejection – reduces operational time
- Independent ejectors - Ejects discharge when each side is full
- Easily adjustable ejector pressure for each side - versatility of collection – productivity – **USP**

# Automatic Lifter

## Load Sensing Delta

**RELIABLE**  
**PROGRESSIVE**



### Features and Benefits

- 80-1280 litre EN840 containers
- High level
- Gravity down
- High ground clearance
- 7 second cycle
- Independent bump bar

### Options

- Single, Double, Triple
- Mechanical WAP
- Weighing & ID

# Automatic Lifter

Load Sensing Rotary

**RELIABLE  
PROGRESSIVE**

## Features and Benefits

- 80-1280 litre EN840 containers
- Low level
- High ground clearance
- 7 second cycle
- Independent bump bar

## Options

- Single, Double, Triple
- Weighing & ID

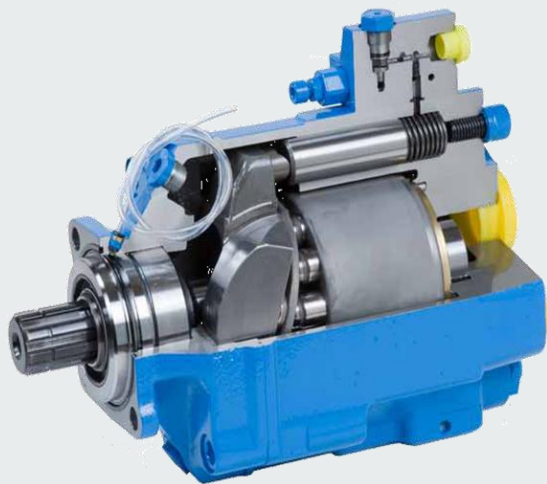


# Load Sensing Hydraulics

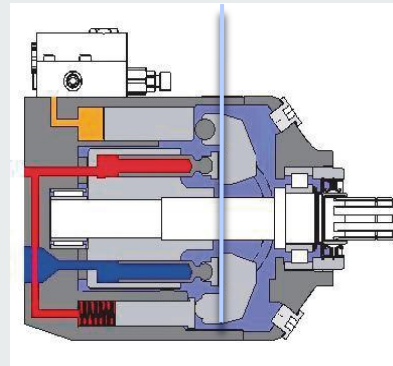
Energy Efficiency

The load sensing hydraulic system uses a feedback loop to ensure only the exact amount of hydraulic oil that is needed is generated by the pump. So the engine revs are not increased until needed and lifter runs around idle speed. As soon as a button is pressed, the small change in the pressure of the load sensing line causes the pump to open and deliver oil.

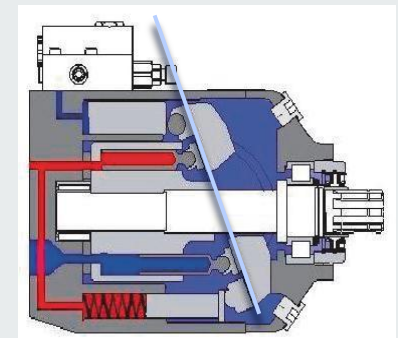
= Reduced fuel consumption, Reduced CO2 emission & Reduced Noise



Zero Displacement



Maximum Displacement





- Galvanised body sub frame - Longer product life - **USP**
- Galvanised ancillary parts - Longer product life
- All internal parts painted black - Improved aesthetics after replacement parts
- Replaceable hopper wear plate - Reduced downtime and repair cost
- Improved cycle time - 20s - Productivity

# Standard from FAUN

FAUN Control System - USP

**RELIABLE**  
**PROGRESSIVE**

- Easy intuitive control
  - Reduce training time and cost
  - Productivity
  - Little temp training
- Full diagnostics - reduce down time
- Integrated rear view camera
  - save costs
  - Health and safety in cab
- Smart card - save settings - reduce downtime
- Password protected – management
- Packer cut off – compliance
- IP67 looms reduced downtime and repair cost

# Options

Customised RCV

**RELIABLE**  
**PROGRESSIVE**



## **ACTIFIT Air - USP**

- simple compliance



## **ACTIFIT**

- accurate under body weighing - productivity



## **Ochsner Telematic System - USP**

- Fully integrated over air connectivity - productivity

# Options

Customised RCV

**RELIABLE**  
**PROGRESSIVE**



## **CIN-ENERGY - USP**

- Reduced fuel cost & reduced CO<sub>2</sub>
- Reduced brake wear



## **E-PTO - USP**

- Reduced fuel cost
- Reduced CO<sub>2</sub>



## **Roof Fall Protection**

- Health and safety

Thank you for your kind attention



FAUN Zoeller UK Ltd  
5 Colemeadow Road  
North Moons Moat  
Redditch  
Worcestershire  
B98 9PB

[www.faun-zoeller.co.uk](http://www.faun-zoeller.co.uk)