

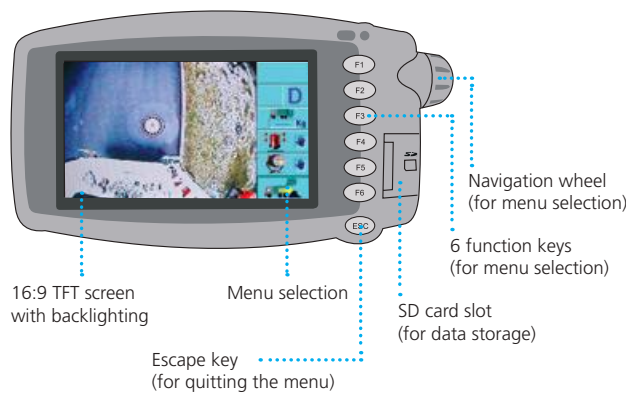


FCS – FAUN Control System

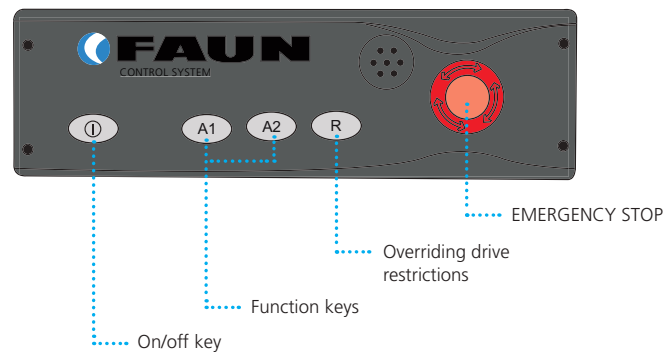
The FAUN Control System (FCS) can be harmoniously integrated into the cockpit of the driver's cab with just a few attachments. The system is based on a modern, future-proof CAN bus controller (Controller Area Network). The surveillance system to the rear and the lighting control and the various analysis tools are pre-installed.

All the system's reports can be read digitally and analysed for your control procedures. All the connectors, contacts and modules are, of course, sealed so that they are watertight and the workmanship of the system components meets European standards.

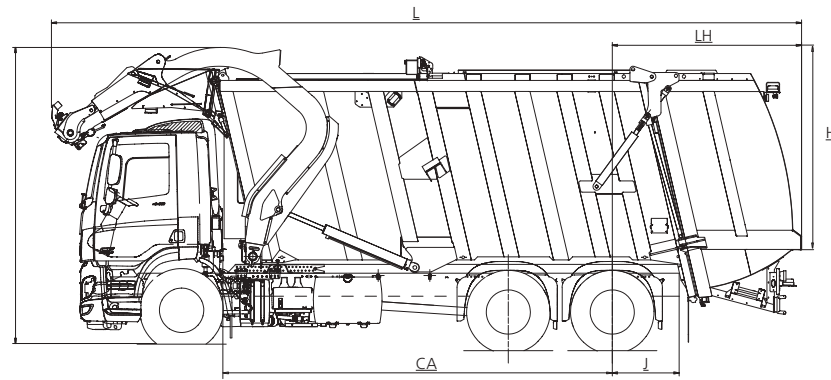
FCS display main menu



Command module



Technical data FRONTPRESS



BODY	528	533	535	538
Body volume [m³]	28	33	35	38
Weight approx. [kg] ⁽¹⁾	9,250	9,300	9,550	10,600
Length (L) approx. [mm]	6,900	7,830	8,470	9,000
Width (W) approx. [mm]	2,550	2,550	2,550	2,550
Height (H) approx. [mm]	3,000	3,000	3,000	3,000
Height when lifting bin [mm]	5,600	5,600	5,600	5,600
Rear overhang (LH) [mm] ⁽²⁾	2,040	2,730	2,630	2,600
Hydraulic pressure max. [bar]	220	220	220	220
CHASSIS RECOMMENDATION ⁽³⁾				
Permitted laden weight [t]	26	26	32	32
Weight approx. [kg]	8,350	8,400	9,300	9,300
Frame overhang (J) [mm]	1,100	1,000	1,000	1,000
Wheelbase standard driver's cab (R) approx. [mm]	3,900 + 1,350	4,200 + 1,350	3,650 + 1,450 + 1,350	3,950 + 1,450 + 1,350
WHOLE VEHICLE EXAMPLE				
Cab to axle distance (CA) approx. [mm]	4,850	5,340	6,120	6,420
Height when lifting bin [mm]	5,600	5,600	5,600	5,600
Rear overhang (LH) [mm] ⁽²⁾	2,040	2,730	2,630	2,600
Hydraulic pressure max. [bar]	220	220	220	220
Payload approx. [kg] ⁽⁴⁾	8,260	8,210	13,645	12,045

⁽¹⁾ including auxiliary frame (acc. to DIN 70020)

⁽²⁾ Measurement from centre of rearmost axle to rear edge of tailgate without lifter, variations possible depending on chassis type

⁽³⁾ Variations possible, depending on chassis make and optional equipment (acc. to DIN 70020)

⁽⁴⁾ Fitting a lifting and tipping system and special equipment to chassis and body, along with accessories, will reduce the permissible payload
Achievable payload may vary depending on the collected material and chassis



FAUN Umwelttechnik GmbH & Co. KG
Feldhorst 4
27711 Osterholz-Scharmbeck
GERMANY
Tel. +49 47 95 9 55-0
Fax +49 47 95 9 55-200
info@FAUN.com

www.FAUN.com



REFUSE COLLECTION VEHICLES

**NEW
GENERATION**

- ⊕ Voluminous
- ⊕ Powerful
- ⊕ Manoeuvrable
- ⊕ Safe

FRONTPRESS

**RELIABLE
PROGRESSIVE**



FRONTPRESS – Made for large volumes

Safe and economical

The FAUN FRONTPRESS is the most economic collection vehicle for collecting commercial waste. It has a consistently even container cross section in the filling area and in the rest of the storage compartment.

The driver is able to control the approach and emptying operation by means of a joystick in a single operation from the driver's cab without having to go into the hazardous area in front of the vehicle. The FRONTPRESS therefore does not just simply offer a working environment protected from the elements, but also avoids contact with the refuse materials.

The FRONTPRESS is fitted with the FAUN control system with ergonomic operating concept and the same hardware for all FAUN vehicles.

An investment for the future

The FRONTPRESS from FAUN is the most cost effective solution for disposing of scrap and refuse from industry and commerce, as large waste bins and large waste containers between 1.1 and 10 m³ can be emptied with the FRONTPRESS in an efficient one-man operation.

Ideal waste disposal concept

Thanks to continuous further development and innovation, the FRONTPRESS offers the greatest possible volume, safety and reliability. The lifting trunnion device integrated into the forks for single containers works safely and reliably. A large body capacity on a short wheelbase is one of the features of the FAUN front loader. Available with a body capacity of between 28 and 38 m³, the FRONTPRESS offers maximum volume with excellent manoeuvrability.

Our strength – dialogue with the customer

Close liaison with our customers all over the world enables us to provide customised vehicles for every waste disposal task. No matter what your plans are: Our huge range of different waste collection vehicles means FAUN can always provide you with appropriate and therefore economic solutions.

Our customers particularly value the broad-based after sales support. You can get original spare parts directly from our spare parts service within 24 hours.

FAUN's services provide you with tailored financing options for your vehicle fleet: irrespective of whether you have a hire or leasing contract. You get everything directly from the manufacturer. Regular maintenance and inspections are also all part of the comprehensive FAUN service.



Always on the move

The plug-in displacement pump offers the possibility of compaction while pack on the ram. What is more, installing such a plug-in displacement pump offers many benefits. The installation costs are reduced by 50 percent and the vehicle is only supplied with oil when it is required, this protects the environment and your purse.



Slimmed down

Effective selection of materials and the light but solid frame structure of the container result in an optimum weight.



Low tipping angle

The well thought-out configuration of the lifting arm geometry ensures a particularly low tipping angle. There is no chance of drift or paper being blown away.



Safely to the top up and out

The driver can get safely on the roof with easily accessible ladder. For safety reasons, both compaction and lifting device are shut down automatically.



Weighing and identification systems

Universal preparation for weighing and identification systems. It is possible to install common weighing systems easily and in a short space of time.



Large maintenance door with ladder

Easy access to the hopper on the front side of the ejector panel is provided for easy maintenance.



Well secured

Hydraulic and electric lines are placed on the inside of waxed body profiles. Damage from low hanging branches can be avoided and access is provided through inspection flaps.



Good shape

Container friendly forks slide easily into the guide pockets and lift the container precisely. This prevents black stripes and dents on the container front by unwanted contact with the lifter.



Free lane

The self-adjusting steel scrapers on the ejector plate clear everything out. The smooth container bottom is scraped perfectly clean even with difficult material.



Provide rubber

Additional rubber aprons increase the overhang of the tipping area for containers. Hydraulic sequential control of the lids prevents any bulky goods from getting jammed.



For shrewd money managers

The FRONTPRESS does not require more than a standard 8 t front axle without air suspension. Saving of this chassis option results in a lower price of the complete vehicle.



Everything under control

With its optional clear remote control, according to EN 1501-3, the lifter can be controlled outside the cab. When small bins have to be picked up, the driver saves a lot of time and hassle.



Accurate production

FAUN relies on quality. All components are shot blasted.